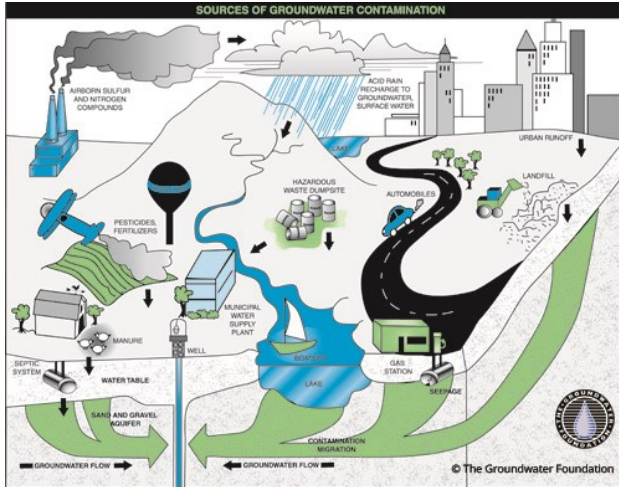


## MAINTAIN YOUR SEPTIC SYSTEM

Groundwater contaminated by poorly or untreated household wastewater poses dangers to drinking water and to the environment. Septic system maintenance comes down to four key elements:

- Inspect and Pump Frequently
- Use Water Efficiently
- Properly Dispose of Waste
- Maintain Your Drainfield

For more information on septic systems and system care, please visit [www.epa.gov/septic](http://www.epa.gov/septic).



## BE AWARE OF THE DANGERS OF GREASE

Grease sticks to the insides of drain pipes and sewer pipes, restricting water flow. As more and more fats, oils and grease accumulate, the greater the chances of a back-up. Sewage can back-up into your tubs or toilets; even worse, it can overflow into streams and groundwater. Please be proactive in fighting grease., don't pour it down the drain!!!

**IREDELL WATER CORPORATION**  
571 Jennings Rd.  
Statesville, NC 28625  
(704) 876-0672

**Quality**  
On Tap!  
Our Commitment  Our Profession

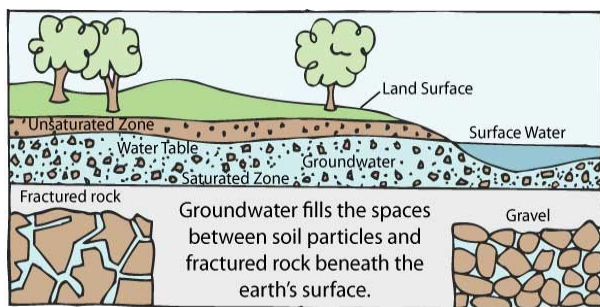
## WELLHEAD PROTECTION PROGRAM



**Our Goal is to Provide a Clean, Safe, Dependable Water Supply for All Our Customers**

## WHAT IS GROUNDWATER?

Groundwater is the water found underground in the cracks and spaces in soil, sand and rock. It is stored in and moves slowly through geologic formations of soil, sand and rocks called aquifers. Iredell Water Corporation uses groundwater it pumps from the ground using thirty-three (33) wells located in its service area.



"This material was reproduced from groundwater.org with the permission of The Groundwater Foundation. © The Groundwater Foundation. All Rights Reserved.

## THE WELLHEAD PROTECTION PROGRAM

Iredell Water Corporation has implemented a Wellhead Protection Program to protect its water supply from contamination. As a part of the program, we have identified vulnerable areas around the each well site called "Wellhead Protection Areas". Chemicals and other pollutants spilled or dumped in these areas can be drawn into the wells, possibly contaminating our community's drinking water supply. Residents and businesses in these areas must be very careful with chemicals and other pollutants.

## POLLUTION SOURCES

Many things we do in our daily lives can pollute our surface water and groundwater. Sources of groundwater pollution include:

-  Used oil, paint thinner, gasoline and other chemicals poured on the ground.
-  Leaking fuel storage tanks (aboveground and underground).
-  Overuse of pesticides and fertilizers on lawns, golf courses and agriculture fields.
-  Chemical spills at businesses, farms and along highways.
-  Illegal dumps and poorly managed landfills.
-  Failing septic tanks.
-  Leaking sewer lines.
-  Improperly abandoned wells.
-  Unlined waste pits, ponds and lagoons.
-  Farm machinery repair shops/ Automobile repair shops
-  Cemeteries/Funeral Homes
-  Golf Courses
-  Animal Feedlot/Animal Waste Storage

## HOW CAN YOU HELP?

Water is our most valuable natural resource and we are responsible for protecting it! You can help by doing your part to protect our supply and by supporting this program. Here are some tips:

- Never pour used oil, paint thinner or other hazardous chemicals on the ground or down the drain. Take them to a recycling center or to a Household Hazardous Waste Collections Day.
- Check for and fix leaks in storage tanks (i.e. home heating oil/kerosene) at your home or business.
- Inspect and pump your septic tank as needed.
- Have any unused wells on your property properly abandoned.
- Minimize your use of pesticides and fertilizers, storing them properly.
- Clean up junk and debris on your property.
- Report all chemical spills immediately.
- Encourage community leaders and businesses to do everything possible to protect our drinking water supply.

